

Impact sound reduction according to ISO 140-8

Measurement of the impact sound reduction through a ceiling pad on a solid reference ceiling in test stands

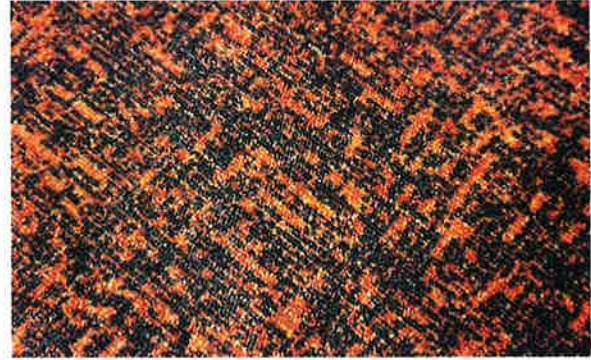
On behalf of: **EGETÆPPER A/S, INDUSTRIVEJ NORD 25, DK-7400 HERNING**

Object:

Highline Carré Ecoline WT

Assembly:

Item: 14197
Batchno.: TH20790-0001
Dyelot: 135146
Dim.: 4000/3000/4.7mm

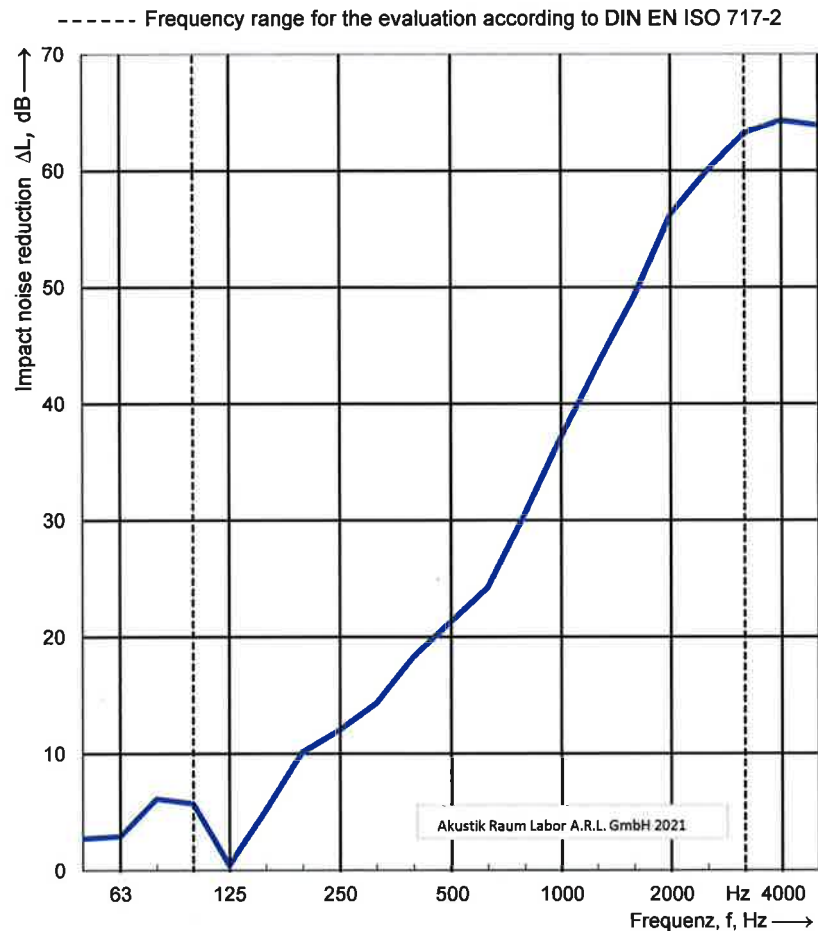


Volume of the receiving room: 53,3 m³
Test stand: HfT Stuttgart
Day of measurement: 29.06.2021

Temperature: 24,7 °C
Humidity: 43,9 %
Air pressure: 960 hPa

| Frequency f [Hz] | L _{n,0} Third [dB] | ΔL Third [dB] |
|------------------------|-----------------------------------|---------------------|
| 50 | 65,8 | 2,7 |
| 63 | 56,9 | 2,9 |
| 80 | 58,3 | 6,1 |
| 100 | 62,6 | 5,7 |
| 125 | 67,1 | 0,4 |
| 160 | 71,0 | 5,1 |
| 200 | 70,0 | 10,1 |
| 250 | 69,0 | 12 |
| 315 | 69,9 | 14,3 |
| 400 | 70,6 | 18,3 |
| 500 | 71,3 | 21,3 |
| 630 | 71,4 | 24,2 |
| 800 | 71,5 | 30,5 |
| 1000 | 72,4 | 37,1 |
| 1250 | 74,8 | 43,2 |
| 1600 | 75,8 | 49,1 |
| 2000 | 74,8 | 56,2 |
| 2500 | 73,3 | 60 |
| 3150 | 73,5 | 63,2 |
| 4000 | 72,3 | <64,3 |
| 5000 | 70,2 | <63,9 |

Measurement limit



Parameters according DIN EN ISO 717-2:

$\Delta L_w = 25$ dB

$C_{i,\Delta} = -13$ dB

$C_{i,r} = 2$ dB

The measurement results are based on tests carried out with an artificial sound source.

Measurements in third octave band width.

Akustik Raum Labor

Report-No.: ARL202106250

Test-No.: T1042

Wächtersbach,

20.09.2021

Signature: 

Akustik Raum Labor A.R.L. GmbH

Industriest. 38
63607 Wächtersbach

☎ + 49 (0) 6053 62067 0

☎ + 49 (0) 6053 62067 26

✉ info@akustik-raum-labor.de